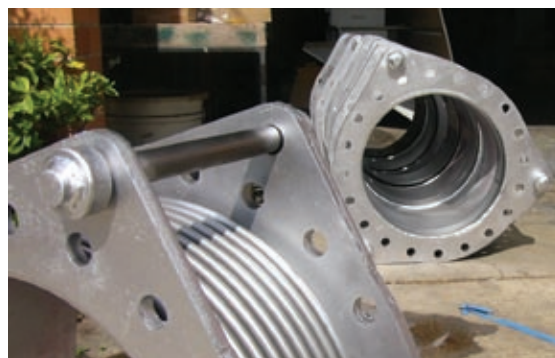


3.25 | Metallic Expansion Joint

Single Tied Expansion Joint (TEJ)

- Used for absorbing pump vibration, lateral movement and minor pipeline misalignment.
- Standard assemblies with flanges, weld ends or a combination of both.
- Anchors required to absorb spring rate forces only.
- Pressure thrust is restrained by the tie rods.
- Standard working pressures are 240, 700, 1400 kPa.
- Pressures up to 4000 kPa are available.
- Standard diameters up to 5000 mm are available on request.



PART NO	NOM	LENGTH		MOVEMENTS*		SPRING RATE
	BORE	FF	WW	± LATERAL	TOTAL LATERAL	LATERAL
	MM	MM	MM	MM	MM	N/MM
50 TEJ-240	50	145	218	12	24	12
50 TEJ-700	50	145	218	8	15	88
50 TEJ-1400	50	145	218	7	13	88
65 TEJ-240	65	180	234	12	24	23
65 TEJ-700	65	180	234	11	21	70
65 TEJ-1400	65	180	234	7	14	126
80 TEJ-240	80	180	240	13	25	18
80 TEJ-700	80	180	240	13	25	54
80 TEJ-1400	80	180	240	8	16	198
100 TEJ-240	100	190	278	12	25	86
100 TEJ-700	100	190	278	10	20	152
100 TEJ-1400	100	190	278	7	14	309
125 TEJ-240	125	215	313	13	26	111
125 TEJ-700	125	215	313	10	20	195
125 TEJ-1400	125	215	313	7	14	381
150 TEJ-240	150	215	338	15	30	131
150 TEJ-700	150	215	338	9	18	228
150 TEJ-1400	150	215	338	6	11	1048
200 TEJ-240	200	225	330	16	32	150
200 TEJ-700	200	225	330	9	18	562
200 TEJ-1400	200	225	330	6	12	2897
250 TEJ-240	250	245	341	17	34	196
250 TEJ-700	250	245	341	10	19	855
250 TEJ-1400	250	245	341	8	14	2071
300 TEJ-240	300	280	400	18	36	184
300 TEJ-700	300	280	400	12	22	797
300 TEJ-1400	300	280	400	8	15	1945
350 TEJ-240	350	400	540	15	30	537
350 TEJ-700	350	400	540	10	19	1142
350 TEJ-1400	350	400	540	6	12	3467
400 TEJ-240	400	400	540	10	20	544
400 TEJ-700	400	400	540	5	10	1841
400 TEJ-1400	400	400	540	4	7	4314
450 TEJ-240	450	450	590	8	16	477
450 TEJ-700	450	450	590	5	9	1574
450 TEJ-1400	450	450	590	4	7	5270
500 TEJ-240	500	450	590	9	18	843
500 TEJ-700	500	450	590	6	11	2288
500 TEJ-1400	500	450	590	4	8	5350
600 TEJ-240	600	450	590	7	14	1122
600 TEJ-700	600	450	590	4	9	4954
600 TEJ-1400	600	450	590	3	6	9468

*Non-concurrent